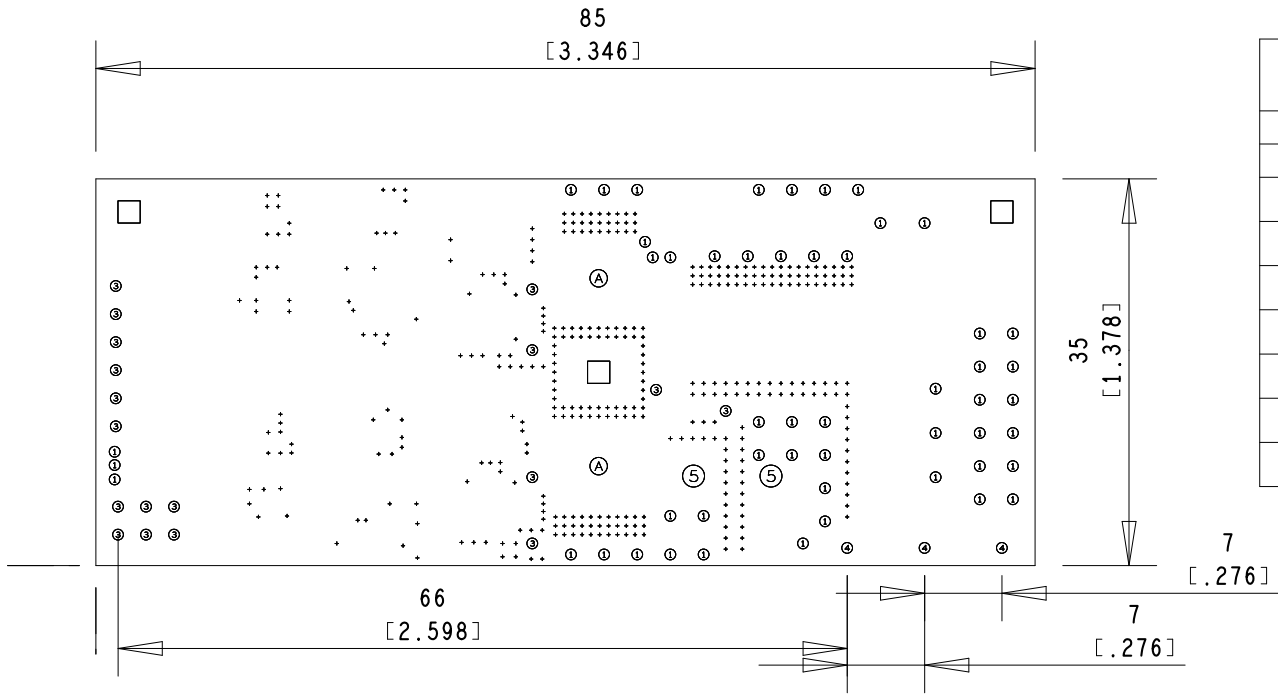
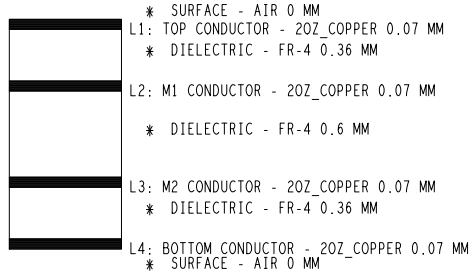


NOTES - UNLESS OTHERWISE SPECIFIED

1. ALL DIMENTIONS ARE IN MILLIMETERS.
2. THIS BOARD SHALL MEET THE REQUIREMENT OF IPC-A-6012 CLASS 2.
3. LAMINATE TO BE HIGH Tg FR4 OR EQUIVALENT.
4. BOARD SHALL MEET THE REQUIREMENT OF UL 796 AND 94V-0 FLAMMABILITY RATING
5. VENDORS UL LOGO OR DESIGNATION SHALL BE LOCATED ON SECONDARY SIDE OF BOARD, RUBBER STAMPED OR SILKSCREENED.
6. SURFACE FINISH IS ENIG, 3-8 uINCHES of Au OVER MINIMUM 100uINCHES Ni.
7. ALL HOLE DIAMETERS ARE STATED AS FINISHED HOLE SIZES. ALL PLATED THROUGH HOLES TO HAVE A MINIMUM OF 0.025mm CU.
8. SOLDERMASK SHALL BE PHOTO-IMAGED LIQUID POLYMER, IN ACCORDANCE WITH IPC-SM-810, TYPE B, CLASS T, OVER BARE COPPER. SOLDERMASK COLOR: GREEN
9. SILKSCREEN SHALL BE NON-CONDUCTIVE WHITE EPOXY INK AND TO BE REMOVED FROM SOLDER PADS PROVIDING A MINIMUM CLEARANCE OF 0.0762mm
10. THIS BOARD TO BE RoHS COMPLIANT.
11. PANELING: NOT REQUIRED, ALLOWABLE AT MANUFACTURER'S DISCRETION



DRILL CHART: TOP to BOTTOM			
ALL UNITS ARE IN MILLIMETERS			
FIGURE	SIZE	PLATED	QTY
+	0.305	PLATED	363
①	0.432	PLATED	51
③	1.0	PLATED	18
④	1.65	PLATED	3
⑤	2.0	PLATED	2
Ⓐ	1.6	NON-PLATED	2
□	4.0	NON-PLATED	3



DESIGN CROSS SECTION CHART
TOTAL THICKNESS 1.6 MM

BOARD DETAILS

Minimum Trace Width (Gap): 0.254 mm
Minimum Feature Size (Width): 0.254 mm
Minimum Hole Size: 0.3 mm
Copper weight: 2oz all layers
Total number of drills: 442

	Product GS665008/16T HALF BRIDGE DAUGHTER BOARD	Sheet Description FABRICATION DRAWING		Rev A
	Date 04-AUG-2016	Drawing GS66508/16T-EVBDB-SCH	Sheet 1 of 1	