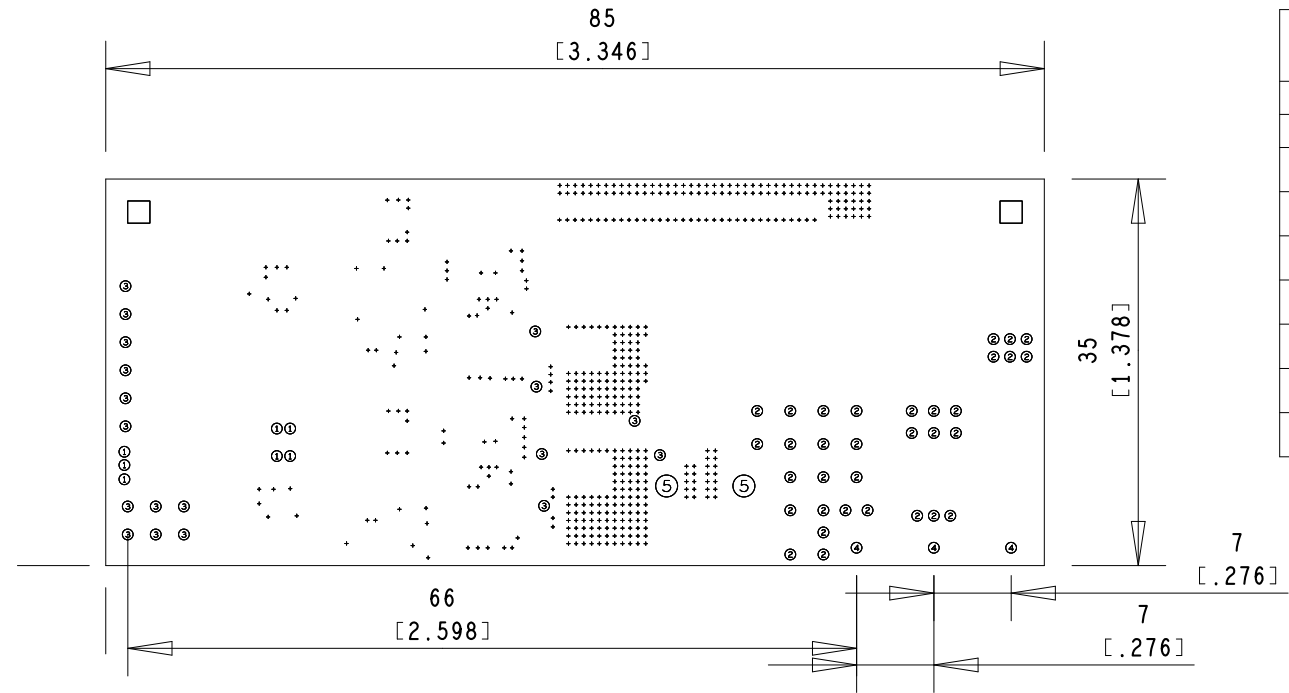


NOTES - UNLESS OTHERWISE SPECIFIED

- 1. ALL DIMENTIONS ARE IN MILLIMETERS.
- 2. THIS BOARD SHALL MEET THE REQUIREMENT OF IPC-A-6012 CLASS 2.
- 3. LAMINATE TO BE HIGH Tg FR4 OR EQUIVALENT.
- 4. BOARD SHALL MEET THE REQUIREMENT OF UL 796 AND 94V-0 FLAMMABILITY RATING
- 5. VENDORS UL LOGO OR DESIGNATION SHALL BE LOCATED ON SECONDARY SIDE OF BOARD, RUBBER STAMPED OR SILKSCREENED.
- 6. SURFACE FINISH IS ENIG, 3-8 uINCHES of Au OVER MINIMUM 100uINCHES Ni.
- 7. ALL HOLE DIAMETERS ARE STATED AS FINISHED HOLE SIZES. ALL PLATED THROUGH HOLES TO HAVE A MINIMUM OF 0.025mm CU.
- 8. SOLDERMASK SHALL BE PHOTO-IMAGED LIQUID POLYMER, IN ACCORDANCE WITH IPC-SM-810, TYPE B, CLASS T, OVER BARE COPPER. SOLDERMASK COLOR: GREEN
- 9. SILKSCREEN SHALL BE NON-CONDUCTIVE WHITE EPOXY INK AND TO BE REMOVED FROM SOLDER PADS PROVIDING A MINIMUM CLEARANCE OF 0.0762mm
- 10. THIS BOARD TO BE RoHS COMPLIANT.
- 11. PANELING: NOT REQUIRED, ALLOWABLE AT MANUFACTURER'S DISCRETION



DRILL CHART: TOP to BOTTOM			
ALL UNITS ARE IN MILLIMETERS			
FIGURE	SIZE	PLATED	QTY
+	0.305	PLATED	471
①	0.432	PLATED	7
②	0.711	PLATED	33
③	1.0	PLATED	18
④	1.65	PLATED	3
⑤	2.0	PLATED	2
□	4.0	NON-PLATED	2

	* SURFACE - AIR 0 MM
	L1: TOP CONDUCTOR - 20Z_COPPER 0.07 MM
	* DIELECTRIC - FR-4 0.36 MM
	L2: M1 CONDUCTOR - 20Z_COPPER 0.07 MM
	* DIELECTRIC - FR-4 0.6 MM
	L3: M2 CONDUCTOR - 20Z_COPPER 0.07 MM
	* DIELECTRIC - FR-4 0.36 MM
	L4: BOTTOM CONDUCTOR - 20Z_COPPER 0.07 MM
	* SURFACE - AIR 0 MM

DESIGN CROSS SECTION CHART
TOTAL THICKNESS 1.6 MM

BOARD DETAILS

Minimum Trace Width (Gap): 0.254 mm
Minimum Feature Size (Width): 0.254 mm
Minimum Hole Size: 0.3 mm
Copper weight: 2oz all layers
Total number of drills: 536

	Product GS66502B/04B HALF BRIDGE DAUGTHER BOARD	Sheet Description FABRICATION DRAWING		Rev A
	Date 23-AUG-2016	Drawing GS66508B-EVBDB-SCH	Sheet 1 of 1	