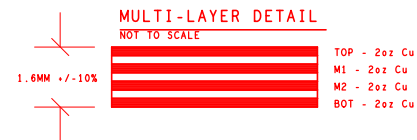


#### BOARD DETAILS

Minimum Trace Width (Gap): 0.254 mm  
 Minimum Feature Size (Width): 0.254 mm  
 Minimum Hole Size: 0.3 mm  
 Copper weight: 2oz all layers  
 Total number of drills: 386

#### NOTES - UNLESS OTHERWISE SPECIFIED

1. ALL DIMENSIONS ARE IN MILLIMETERS.
2. THIS BOARD SHALL MEET THE REQUIREMENT OF IPC-A-6012 CLASS 2.
3. LAMINATE TO BE HIGH Tg FR4 OR EQUIVALENT
4. BOARD SHALL MEET THE REQUIREMENT OF UL 796 AND 94V-0 FLAMMABILITY RATING
5. VENDORS UL LOGO OR DESIGNATION SHALL BE LOCATED ON SECONDARY SIDE OF BOARD. RUBBER STAMPED OR SILKSCREENED.
6. SURFACE FINISH IS ENIG, 3-8 μINCHES of Au OVER MINIMUM 100μINCHES Ni.
7. ALL HOLE DIAMETERS ARE STATED AS FINISHED HOLE SIZES. ALL PLATED THROUGH HOLES TO HAVE A MINIMUM OF 0.025mm CU.
8. SOLDERMASK SHALL BE PHOTO-IMAGED LIQUID POLYMER, IN ACCORDANCE WITH IPC-SM-810, TYPE B, CLASS T, OVER BARE COPPER. SOLDERMASK COLOR: GREEN
9. SILKSCREEN SHALL BE NON-CONDUCTIVE WHITE EPOXY INK AND TO BE REMOVED FROM SOLDER PADS PROVIDING A MINIMUM CLEARANCE OF 0.0762mm
10. THIS BOARD TO BE RoHS COMPLIANT.
11. PANELING: NOT REQUIRED, ALLOWABLE AT MANUFACTURER'S DISCRETION



#### DRILL CHART: TOP to BOTTOM

ALL UNITS ARE IN MILLIMETERS			
FIGURE	SIZE	PLATED	QTY
①	0.305	PLATED	261
②	0.432	PLATED	16
③	0.47	PLATED	3
⑤	0.711	PLATED	82
⑥	1.05	PLATED	11
⑦	1.3	PLATED	1
⑧	2.4	PLATED	4
⑨	5.41	PLATED	4
Ⓐ	4.0	NON-PLATED	4

	Product GS61008P SYNC BUCK EVAL BOARD	Sheet Description FABRICATION DRAWING		Rev C1
	Date 12-APR-2016	Drawing GS61008P-EVBBK-SCH	Sheet 1 of 1	